

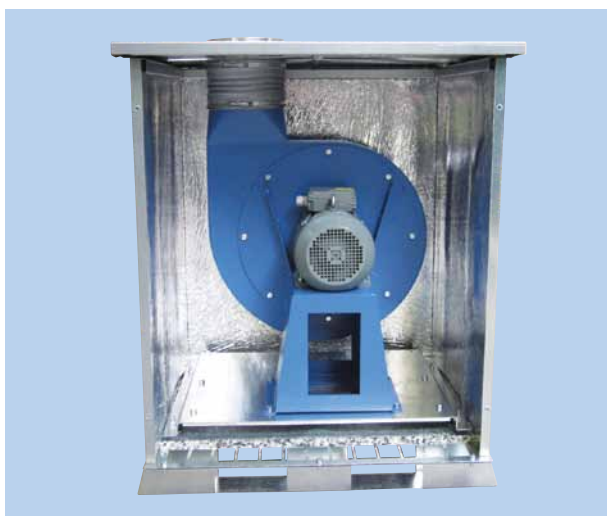


Description VB

Sound enclosure type VB for reduction of mechanical fan noise for clean air transport.

Construction

- Enclosure is made in galvanized steel plates for outdoor mounting
- Internally lined with 2 types of sound absorbing and fire resistant material.
Type A1: FMVSS302/ISO 3795 and ISO 11925-2, class E (DIN 4102 B2)
Type B1: Flammability ME1333, category B (see further group 8)
- Fan mounted on vibration absorbers and connected by flexible couplings to connections
- Prepared for mounting of cable glands (up to 3 pcs.)
- Made with mountings to firm surface



Application

- For mechanical noise reduction of Gram fans. Construction not suitable for material transport due to flexible couplings to connections.



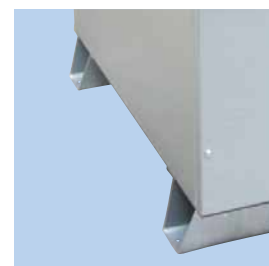
Flex connection - only for clean air. Mounted on inlet and outlet.



Mounted on vibration dampers.

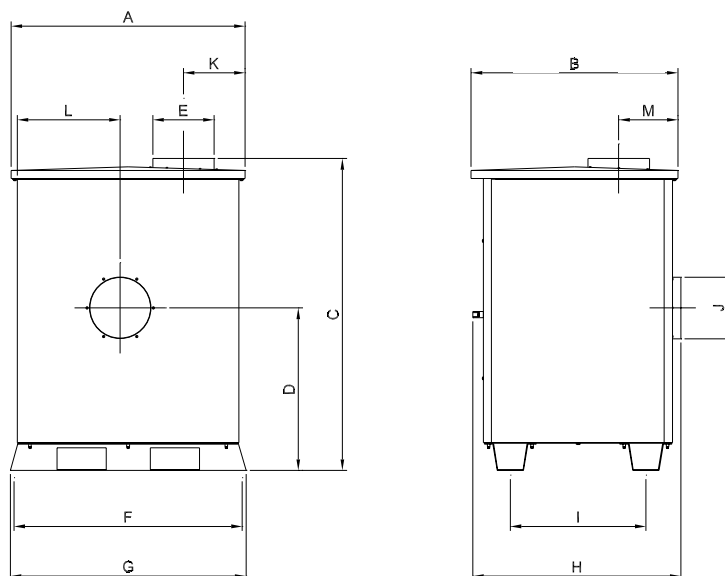


Prepared for cable gland mounting,



Easy anchoring at firm surface.

- Suitable for indoor and outdoor mounting
- Fan noise reduced by approx. 15 dB(A)
- Internally lined with 2 types of sound absorbing and fire resistant material.
Type A1: FMVSS302/ISO 3795 and ISO 11925-2, class E (DIN 4102 B2)
Type B1: Flammability ME1333, category B
- To achieve total noise damping it is necessary to sound proof fan inlet and outlet with silencers
- Electric motor supplied with cooling air through sound sluice



Type	Item no..	A	B	C	D	E	F	G	H	I	J	K	L	M	Weight incl. fan [kg]
VT 500-O2/-O4	03 184 000	744	699	747	293	∅100	724	756	713	493	∅100	261	311	228	57
VT 1000-O2/-O4	03 180 000	744	699	747	353	∅160	724	756	713	493	∅125	201	311	228	66
VT 2000-O2/-O4	03 181 000	744	699	747	353	∅160	724	756	713	493	∅160	201	311	228	67
VL 550-C2	03 182 000	744	699	747	354	∅160	724	756	713	493	∅160	192	288	212	64
VL 750-C2	03 181 000	744	699	747	353	∅160	724	756	713	493	∅160	201	311	228	66
VL 1100-C2/-C4	03 188 000	744	699	747	353	∅200	724	756	713	493	∅200	211	311	245	92
VL 1150-C2	03 183 000	826	744	879	384	∅200	806	838	757	538	∅200	274	324	229	92
VH 900-O2	03 190 000	826	744	879	376	∅125	806	838	757	538	∅125	242	321	251	94
VH 1800-O2	03 191 000	826	744	879	376	∅160	806	838	757	538	∅160	242	321	251	101
VH 2700-O2	03 192 000	826	744	879	376	∅200	806	838	757	538	∅200	242	321	251	104
VH 3800/1-O2	03 246 000	895	890	1030	510	∅250	879	911	903	600	∅250	254	351	268	124
VH 3800/2-O2	03 246 000	895	890	1030	510	∅250	879	911	903	600	∅250	254	351	268	124
VF 1500-C2	03 245 000	895	890	1030	474	∅250	879	911	903	600	∅250	290	351	268	117
VF 2000-C2	03 246 000	895	890	1030	510	∅250	879	911	903	600	∅250	254	351	268	139
VF 2500-C2	03 246 000	895	890	1030	510	∅250	879	911	903	600	∅250	254	351	268	144
VE 2200-C2/-C4	03 396 000	1009	897	1284	559	∅315	988	1020	910	607	∅315	315	398	271	200
VE 3000-C2/-C4	03 397 000	1009	897	1284	559	∅315	988	1020	910	607	∅315	315	398	281	209
VE 4000-C2/-C4	03 398 000	1142	1147	1322	604	∅400	1110	1142	1160	857	∅400	383	421	358	230
VE 5500-C2/-C4	03 399 000	1142	1147	1322	604	∅500	1110	1142	1160	857	∅500	383	421	358	250
VE 7500-C2/-C4	03 399 500	1142	1147	1322	604	∅500	1110	1142	1160	857	∅500	383	421	358	264
VP 1600/2-C2	03 343 500	1142	1147	1322	597	∅250	1110	1142	1160	857	∅250	334	459	249	200
VP 1600/3-C2	03 343 000	1142	1147	1322	597	∅250	1110	1142	1160	857	∅250	357	459	245	200
VP 2600/1-C2	03 344 000	1142	1147	1322	597	∅250	1110	1142	1160	857	∅250	357	459	259	290
VP 2600/2-C2	03 344 000	1142	1147	1322	597	∅250	1110	1142	1160	857	∅250	357	459	259	290

Data is subject to alterations
Rev. 01.20

Type	Item no.	A	B	C	D	E	F	G	H	I	J	K	L	M	Weight incl. fan [kg]
RV 35/1-C2	03 430 400	1009	897	1274	661	ø250	998	1020	811	607	ø250	300	463	309	220
RV 35/2-C2	03 430 700	1009	897	1274	661	ø250	998	1020	911	607	ø250	300	463	302	230
RV 35/3-C2 RV 35-C4	03 430 000	1009	897	1274	661	ø250	998	1020	911	607	ø250	300	463	295	245
RV 45-C2	03 436 400	1142	1147	1310	704	ø315	1110	1142	1160	857	ø315	392	421	344	310
RV 50-C2/-C4	03 440 400	1142	1147	1310	704	ø400	1110	1142	1160	857	ø400	392	421	320	324
RV 60-C2	03 445 400	1259	1324	1612	912	ø500	1238	1270	1340	1033	ø500	389	519	406	420
RV 60-C4	03 445 420	1259	1324	1612	912	ø500	1238	1270	1340	1033	ø500	389	519	406	420
RV 70-C2	03 446 400	1259	1324	1612	915	ø630	1238	1270	1474	1033	ø630	389	519	389	440
RV 70-C4	03 446 420	1259	1324	1612	915	ø630	1238	1270	1474	1033	ø630	389	519	389	440
RV 80-C2	03 447 000	1447	1444	1715	940	ø800	1458	1488	1620	1192	ø800	395	579	484	700
RV 80-C4	03 447 020	1447	1444	1715	940	ø800	1458	1488	1620	1192	ø800	395	579	484	700
RV 85-C2	03 448 000	1447	1444	1715	940	ø800	1458	1488	1620	1172	ø800	395	579	484	722
RV 85-C4	03 448 020	1447	1444	1715	940	ø800	1458	1488	1620	1172	ø800	395	579	484	722
RV 90-C2	03 449 000	1447	1444	1715	940	ø800	1458	1488	1620	1172	ø800	395	579	484	795
RV 90-C4	03 449 030	1447	1444	1715	940	ø800	1458	1488	1620	1172	ø800	395	579	484	795
HV 65-C2	03 360 400	1142	1147	1409	757	ø200	1110	1142	1165	857	ø200	215	529	359	375
HV 70-C2	03 362 400	1142	1147	1409	757	ø200	1110	1142	1165	857	ø200	215	529	342	395
HV 72-C2	03 363 400	1258	1323	1610	879	ø250	1230	1270	1337	1033	ø250	298	488	494	455
HV 78-C2	03 369 400	1258	1323	1610	906	ø315	1238	1270	1337	1033	ø315	308	488	482	518
HV 80-C2	03 369 400	1258	1323	1610	906	ø315	1238	1270	1337	1033	ø315	308	488	482	575

Reduction data for Gram fan sound enclosures

Inductive unit damping Noise damping level (damping) LAeq [dB]								
31.5Hz	63.0Hz	125.0Hz	250.0Hz	500.0Hz	1000.0Hz	2000.0Hz	4000.0Hz	8000.0Hz
5	6	12	15	20	8	3	6	10