



Centrifugal fan with closed fan wheel that is used at source extraction from air pollutant or chip making work processes. The transported air may not contain adhesive or sticky fumes or dust.

Work area:

Max. pressure: 2,150Pa

Max. air volume: 2.100m³/h

Max. dust volume: 5g/m³, non-sticky

Max. particle size: 5x5x5mm, non-sticky

Temperature: Extracted air (transport air in fan) = max. 60°C

Ambient temperature: max. 40°C

Fan order no.	Achieved efficiency	Measurement category	Efficiency category	Efficiency grade	VSD	Production year	Manufacturer page	Model number/type	Rated motor power input, flow rate and vacuum at optimal efficiency			Rpm.	Specific ratio	Disposal page	Environment page	Mounting measurement page
									kW	m ³ /h	Pa (Ps)					
03 013 000	43,0	D	Total	■	NO	CE-mark	0.B4	VL 550-C2	0,61	750	1235	2867	1,01	0.B4	0.B4	0.B4
03 006 000	50,1	D	Total	■	NO	CE-mark	0.B4	VL 750-C2	0,84	930	1600	2887	1,02	0.B4	0.B4	0.B4
03 008 000	52,0	D	Total	■	NO	CE-mark	0.B4	VL 1100-C2	1,07	1435	1370	2902	1,02	0.B4	0.B4	0.B4
03 009 000	64,0	D	Total	■	NO	CE-mark	0.B4	VL 1150-C2	1,51	1700	1815	2846	1,02	0.B4	0.B4	0.B4
03 008 300	33,3	D	Total	■	NO	CE-mark	0.B4	VL 1100-C4	0,21	639	385	1484	1,00	0.B4	0.B4	0.B4

■ No approved according to EU327/2011 ERP 2015

May be mounted on clean air side of Gram filter units as transport fan according to EU 327/2011 and EN 13349/2010

Construction:

Radial fan with closed fan wheel mounted in welded steel cabinet and with directly coupled motor.

Model: C (Transport of dust)

Wheel: Fan wheel type P-G, closed wheel with backward straight, self-cleaning blades
Static/dynamically balanced according to ISO 14694 (BV3 G 6.3)

Housing: Welded in 2mm steel plate

Fan housing can be mounted with various inlet positions (RD0, RD90, RD180, RD270)

Standard enamelling:

Powder enamelled for indoor mounting (RAL 5007), for outdoor placement galvanizing is also recommended

Motor: IE3 at ≥ 0.75kW / IE1 or IE2 at < 0.75kW

B5 flange motor without bimetallic sensor

3x400V 50Hz (three-phased motors can be frequency regulated)

Fan type VL-C is also available galvanized and spark-protected (copper ring in inlet)

For ATEX fans - see group 10

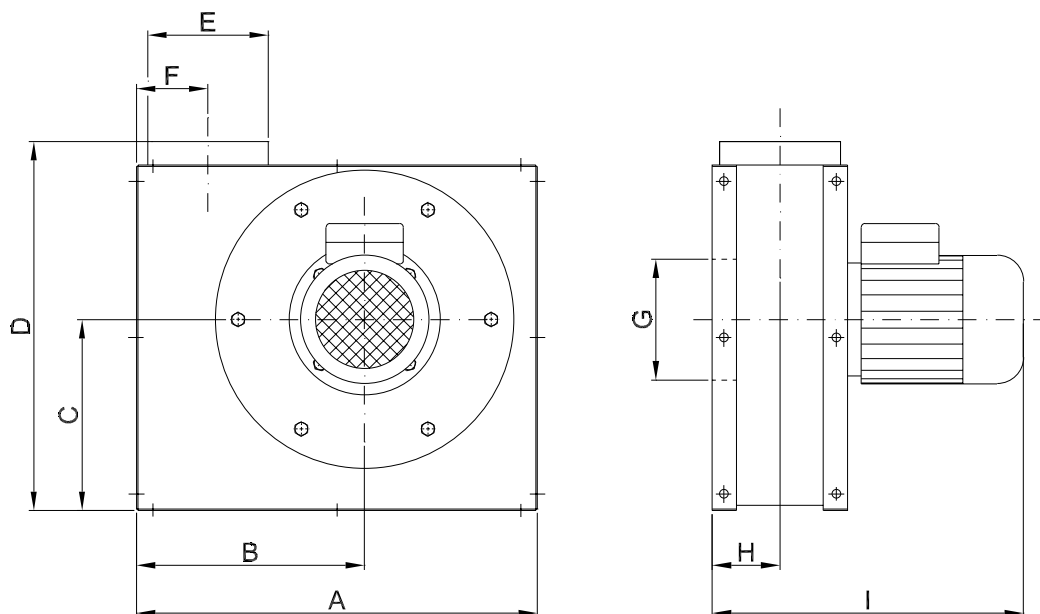
Constructed and tested according to:

- Machine Directive 2006/42/EU
- Electromagnetic Compatibility (EMC) Directive 2004/108/EU
- Low Voltage (LVD) Directive 2014/35/EU
- Harmonized standards: EN 12100, EN 60204-1, EN ISO 13857, ISO 12499
- Further standards: ISO 3746, ISO 5801
- As well as: EU Regulation no. 327/2011 (ERP 2013 and 2015)

Type	Order no.	Volt [V]	[rpm.]	[kW]	Rated current (Amp)	Start current [I_L/I_N]	Weight [kg]
VL 550-C2	03 013 000	3x400	2-pole	0,55	■	■	19,0
VL 750-C2	03 006 000	3x400	2-pole	0,75	■	■	19,0
VL 1100-C2	03 008 000	3x400	2-pole	1,10	■	■	23,0
VL 1150-C2	03 009 000	3x400	2-pole	1,10	■	■	23,0
VL 1100-C4	03 008 300	3x400	4-pole	0,55	■	■	21,0

■ See section "General information" conc. electro motors

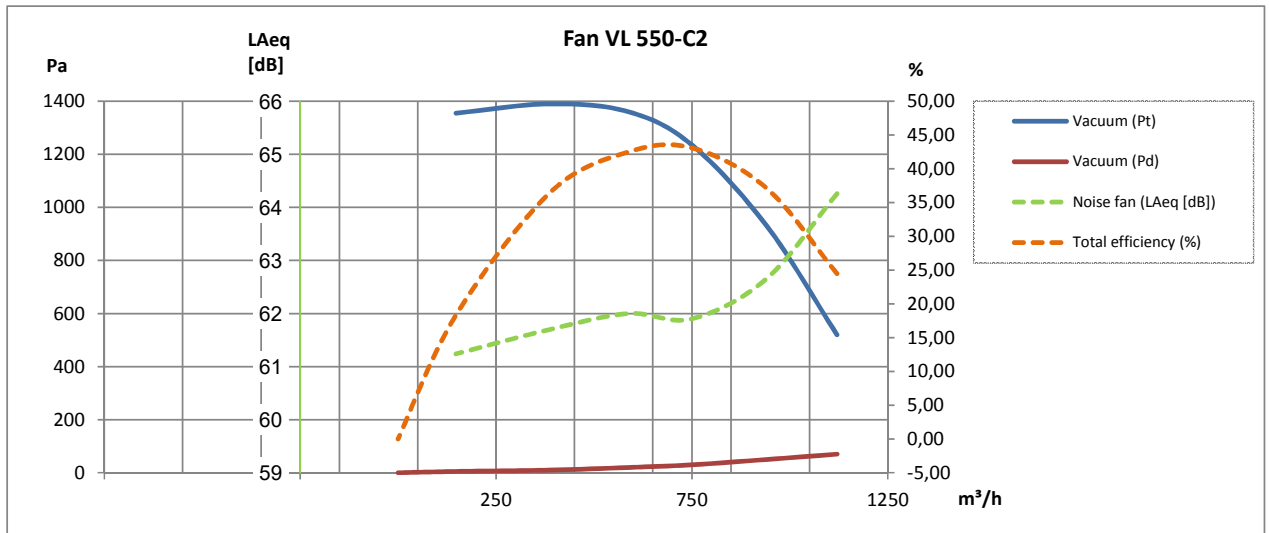
Motor data $\geq 0,75\text{kW}$, 3x400V, according to IE3-motors.



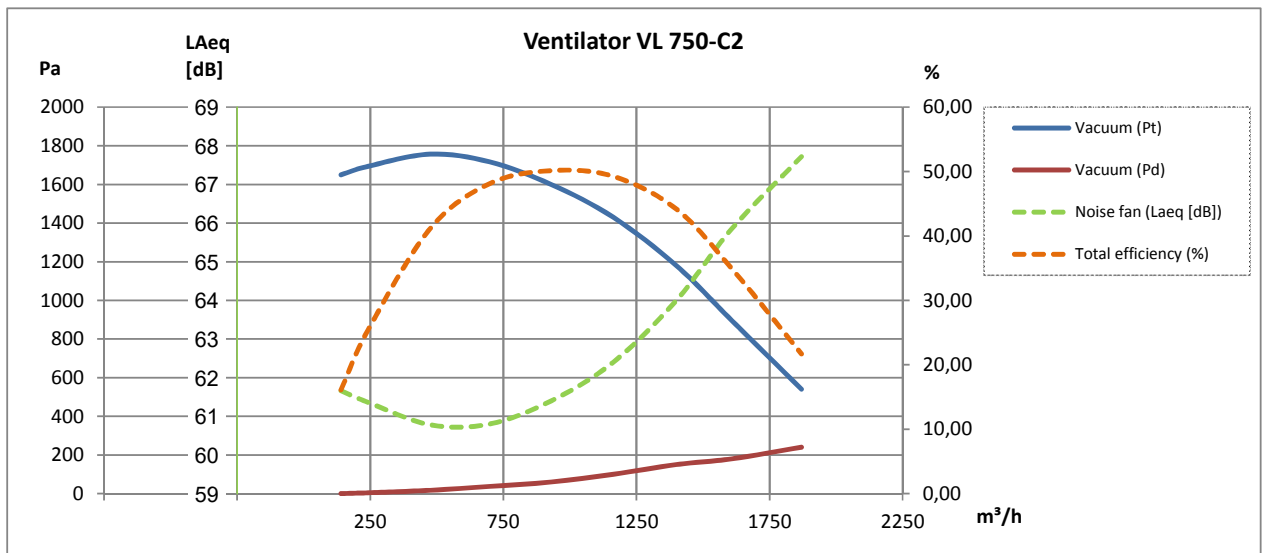
Type	Order no.	A	B	C	D	E	F	G	H	I
VL 550-C2	03 013 000	545	331	236	520	ø160	92	ø160	87	369
VL 750-C2	03 006 000	531	302	253	488	ø160	95	ø160	90	412
VL 1100-C2	03 008 000	531	302	253	488	ø200	104	ø200	107	484
VL 1150-C2	03 009 000	575	333	274	613	ø200	130	ø200	102	438
VL 1100-C4	03 008 300	531	302	253	488	ø200	104	ø200	107	484

Please, note: Connection measurements are nipple measurements

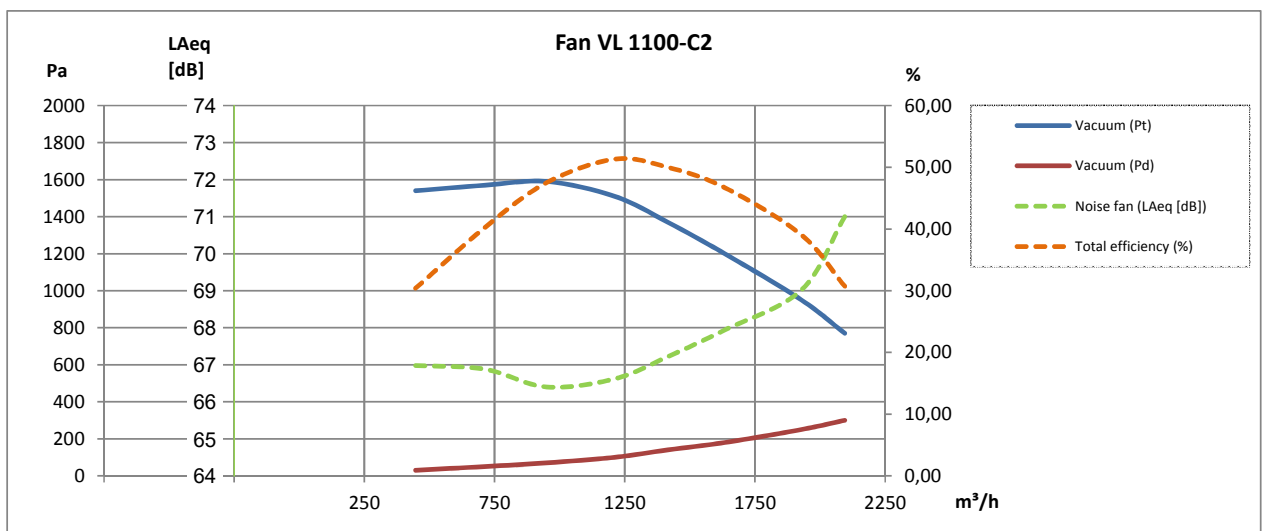
2-pole:



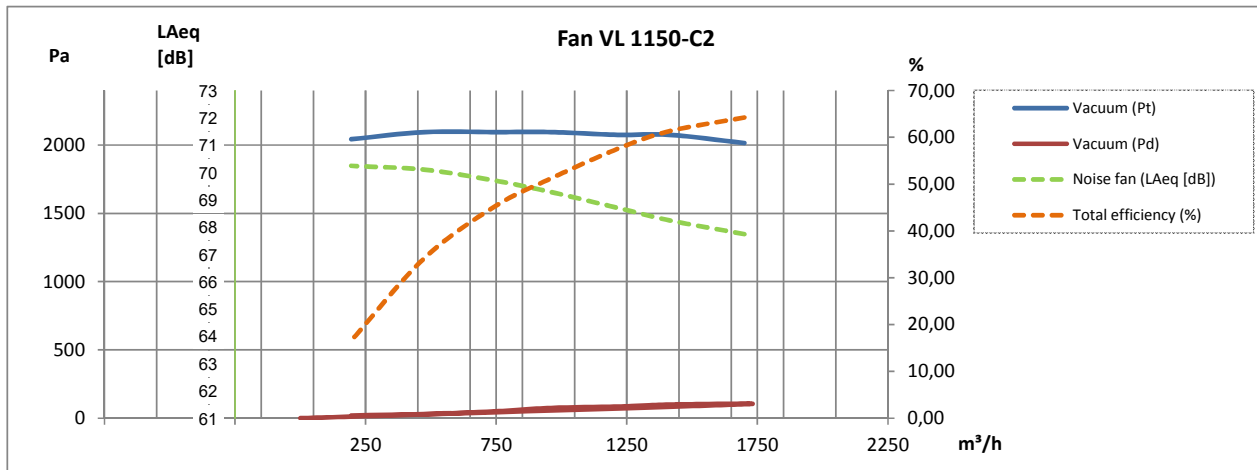
2-pole:



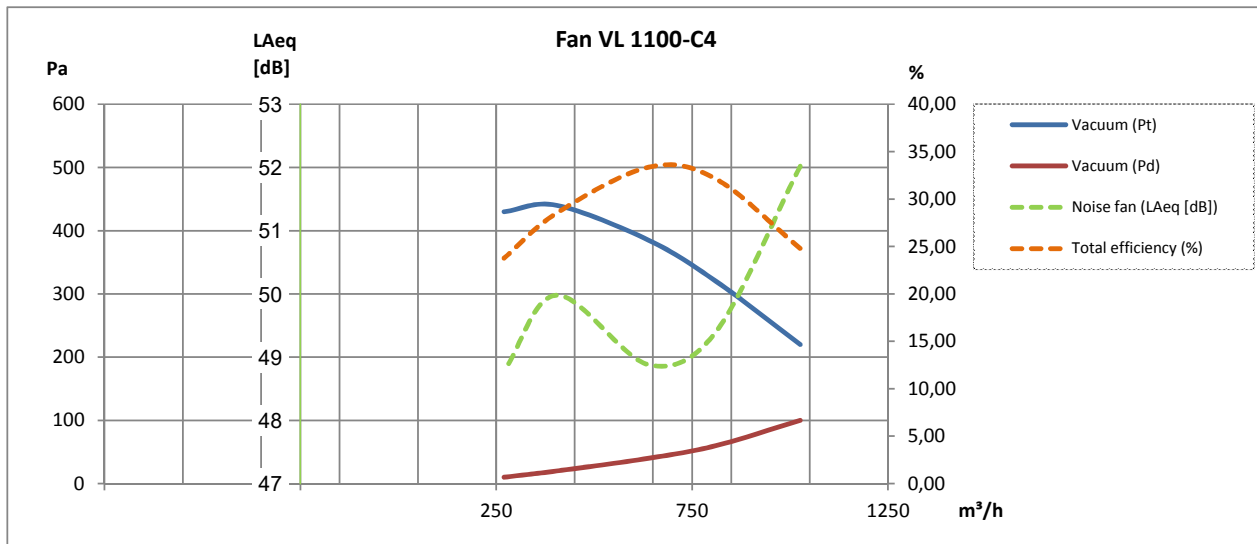
2-pole:



2-pole:



4-pole:



All versions of fan type VT-O is also available i a galvanized version spark protection in copper (Cu) on inlet!

Sound enclosure type VB*:

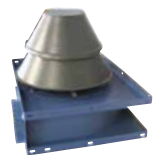
Type (Position RD0)	Order no.
VL 550	03 182 000
VL 750	03 181 000
VL 1100	03 188 000
VL 1150	03 183 000
Additional payment for sound enclosure type VB with side outlet, fan position RD0	03 550 000

* Only for clean air transport



Weather-protected cover for air cooling intake and out for elektro motors:

Type	Order no.
VL 550	03 013 800
VL 750, VL 1100, VL 1150	03 030 800



Fan wheels:

Type	Hub [mm]	Fan type**	[Hz]	Order no.
VL 550	ø14	C2	50	03 034 205
VL 750	ø19	C2/C4	50	03 002 005
VL 1100	ø19	C2/C4	50	03 008 005
VL 1150	ø19	C2/C4	50	03 009 202

**Closed Transport



Photo:
ABB Frequency converter
type ACH 580

Further is available:

- Pressure guard
- Mounting fittings
- Vibrations absorbers
- Safety grid
- FLEX flexible connections
- Explosion-protected construction for application in ATEX zones
- Motor starter Y-D
- Frequency converter