



Photo: ACF-VEH 3000

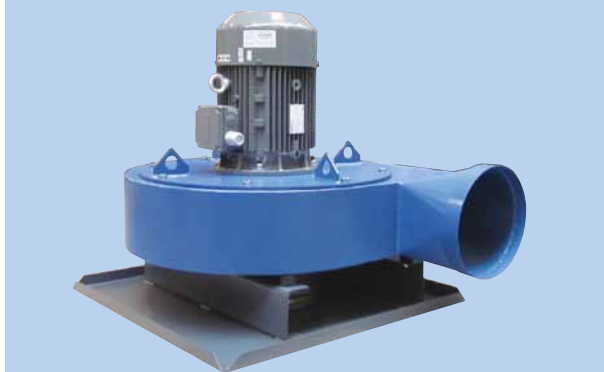


Photo: ACF-RVH 35/3



Photo: Fan in sound enclosure

As accessories to cyclone filter type ACF-T Gram fans type VEH and RVH are delivered - either free-standing or built into sound enclosure.

At mounting in sound enclosure the mechanical emitted fan noise can be reduced by approx. 15 dB(A).

Both fans (ACF-VEH and ACF-RVH) are equipped with closed fan wheel for transport of clean or slightly polluted air and are exclusively used for mounting on Gram cyclone filter type ACF-T.

VEH: Air volume: Up to 7,000m³/h
Vacuum: Up to 2,500Pa

RVH: Air volume: Up to 22,000m³/h
Vacuum: Up to 4,000Pa

Fan construction

- Cabinet: 2-4mm steel plate
 - **VEH:** Spot-welded
 - **RVH:** Fully welded
- Fan wheel:
 - Closed with backward-curved/-inclined straight self-cleaning blades
 - Static/dynamic balanced according to ISO 14694 (BV3 G 6.3)
- Tested according to ISO 5801
- Data regarding Erp 2015 (EU327/2011) is stated in tables below.

Sound enclosure construction

- Fan placed lying on steel plate in bottom and with flexible connections to inlet and outlet
- Inside coated with 2 types of sound absorbing and fire resistant material:
 - Type A1: FMVSS302/ISO 3795 and EN ISO 11925-2, class E (DIN 4102 B2)
 - Type B1: Flammability ME1333, category B
- Service access to fan through bolted-on front side
- Electro motor is supplied with cooling air by filter unit outlet (cleaned process air)
- Suitable for both indoor and outdoor mounting (for outdoor mounting the cabinet must be delivered in a galvanized version).

To obtain total fan noise damping it is necessary to noise dampen fan outlet. This is done by e.g. channel silencers.

Cyclone filter type ACF-T is available with fan type ACF-VEH in the following combinations:

Type	Fan Order no.	Fan in sound enclosure Order no.	ACF 39	ACF 52H	ACF 78H	ACF 52	ACF 104H	ACF 130H
ACF-VEH 2200-C2	04 032 970	04 033 970	•	•	•			
ACF-VEH 3000-C2	04 032 975	04 033 960	•	•	•			
ACF-VEH 4000-C2	04 032 980	04 034 860	•	•	•			
ACF-VEH 4000-C2	04 034 970	04 034 890				•	•	•
ACF-VEH 5500-C2	04 032 985	04 034 840	•	•	•			
ACF-VEH 5500-C2	03 034 975	04 034 845				•	•	•
ACF-VEH 7500-C2	04 034 980	04 034 850				•	•	•

Consumption data for fan type ACF-VEH:

Type	Volt [V]	[Rpm.]	[kW]	Rated current (Amp)	Start current [I_L/I_N]	Fan Weight [kg]	Fan in sound enclosure Weight [kg]
ACF-VEH 2200-C2	3x400	2-pole	2.20	■	■	76 ¹⁾	212 ¹⁾
ACF-VEH 3000-C2	3x400	2-pole	3.00	■	■	86 ¹⁾	221 ¹⁾
ACF-VEH 4000-C2	3x400	2-pole	4.00	■	■	104 ¹⁾ / 111 ²⁾	297 ¹⁾ / 288 ²⁾
ACF-VEH 5500-C2	3x400	2-pole	5.50	■	■	133 ¹⁾ / 140 ²⁾	326 ¹⁾ / 318 ²⁾
ACF-VEH 7500-C2	3x400	2-pole	7.50	■	■	166 ²⁾	343 ²⁾

¹⁾ ACF 39, 52H and 78H.

²⁾ ACF 52, 104H and 130H.

Motor data ≥ 0.75 kW, 3x400V, according to IE3-motors.

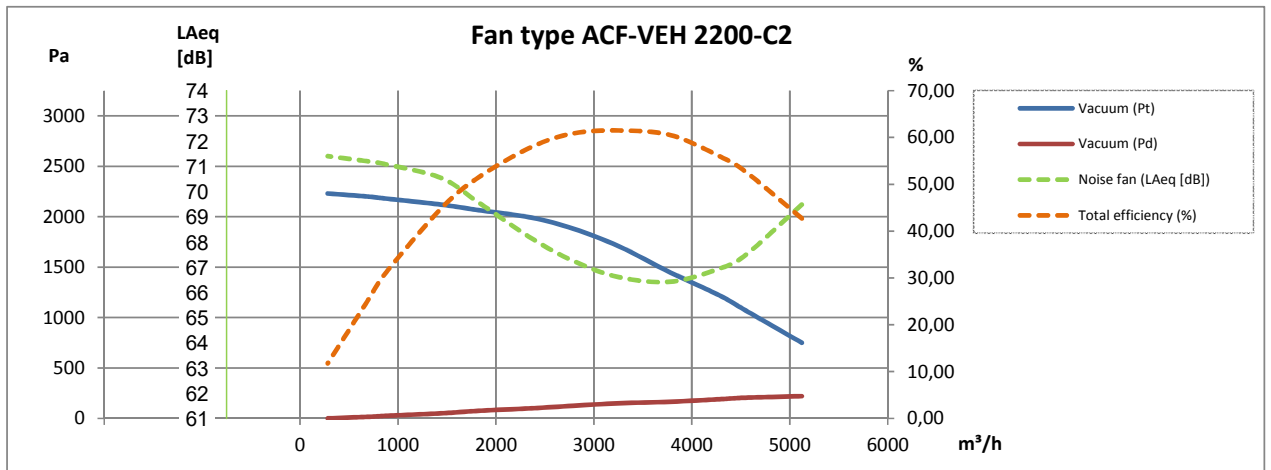
■ See section "General information" conc. electro motors

Fan	Achieved efficiency	Measurement category	Efficiency category	Efficiency grade	VSD	Production year	Manufacturer page	Modul number/type	Rated motor power input, flow rate and pressure			Rpm.	Specific ratio	Disposal page	Environment page	Mounting measurement page
									kW	m ³ /h	Pa (Ps)					
VEH 2200-C2	61,5	D	Total	■	NO	CE-mark	A15	03 384 000	2,56	3257	1705	2853	1,02	A15	A15	A15
VEH 3000-C2	59,9	D	Total	■	NO	CE-mark	A15	03 386 000	2,99	3596	1760	2929	1,02	A15	A15	A15
VEH 4000-C2	55,7	D	Total	■	NO	CE-mark	A15	03 388 000	4,23	4668	1780	2929	1,02	A15	A15	A15
VEH 5500-C2	58,0	D	Total	■	NO	CE-mark	A15	03 390 000	6,07	4741	2620	2936	1,03	A15	A15	A15
VEH 7500-C2	57,0	D	Total	■	NO	CE-mark	A15	03 392 000	5,95	4383	2735	2951	1,03	A15	A15	A15

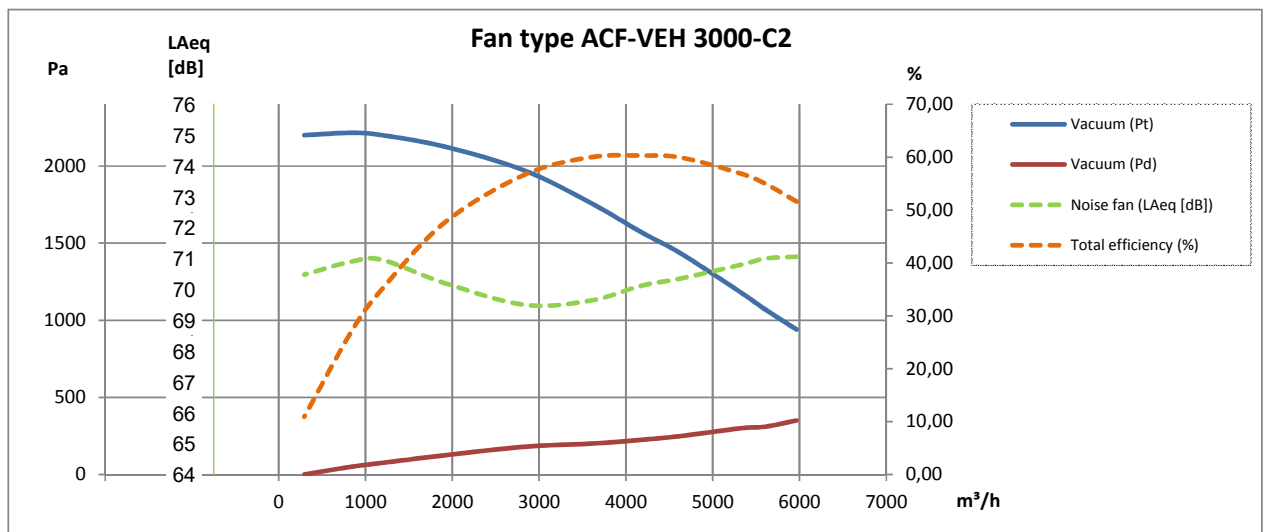
■ Not approved according to EU327/2011 ERP 2015

May be mounted on clean air side of Gram filter units as transport fan according to EU 327/2011 and EN 13349/2010

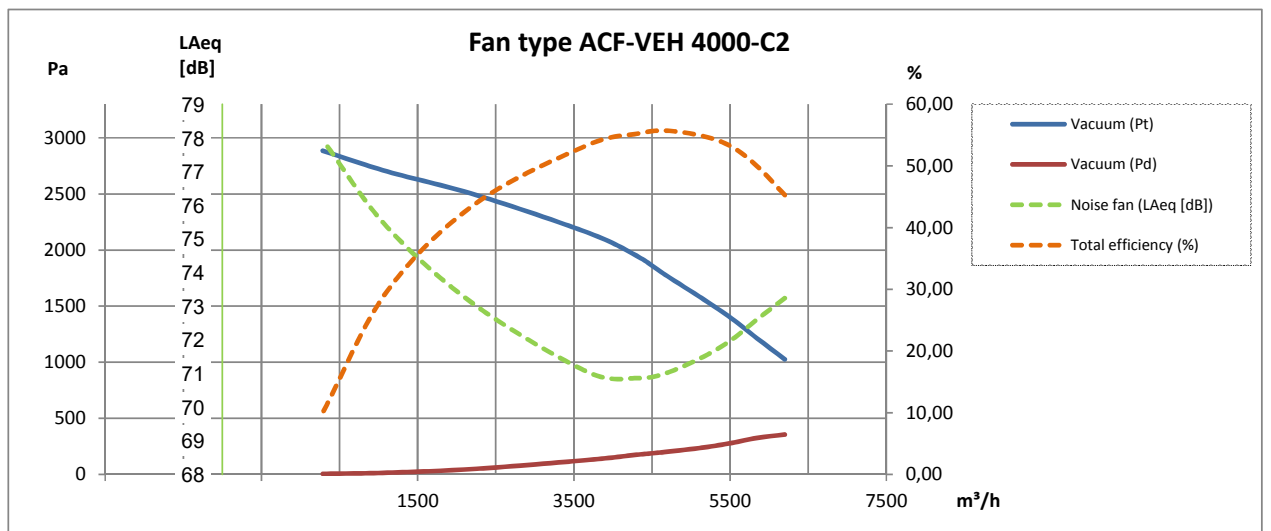
2-pole:



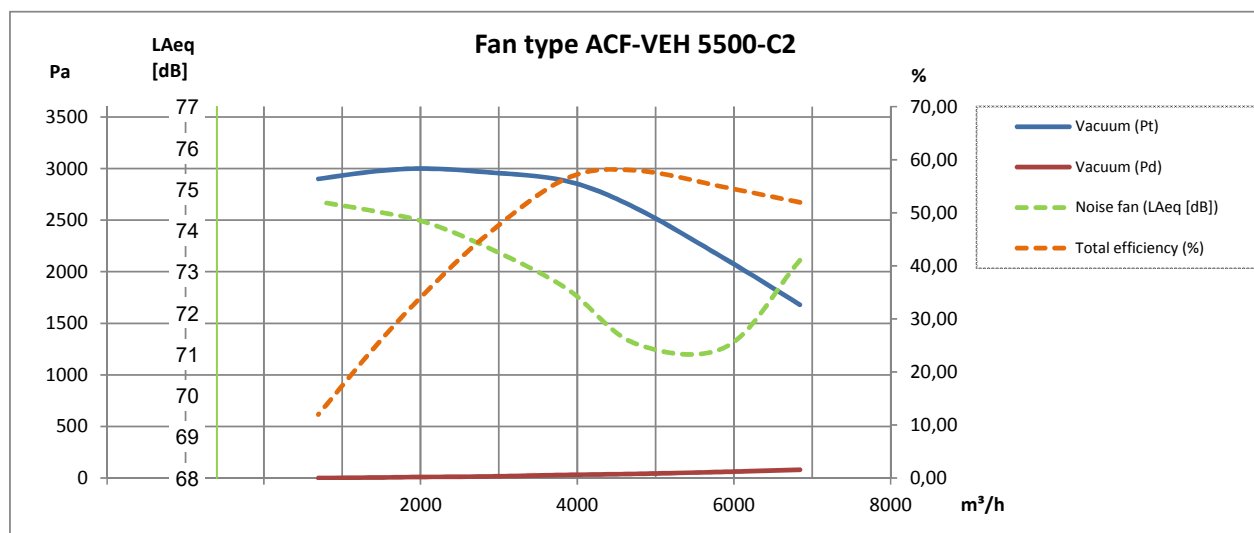
2-pole:



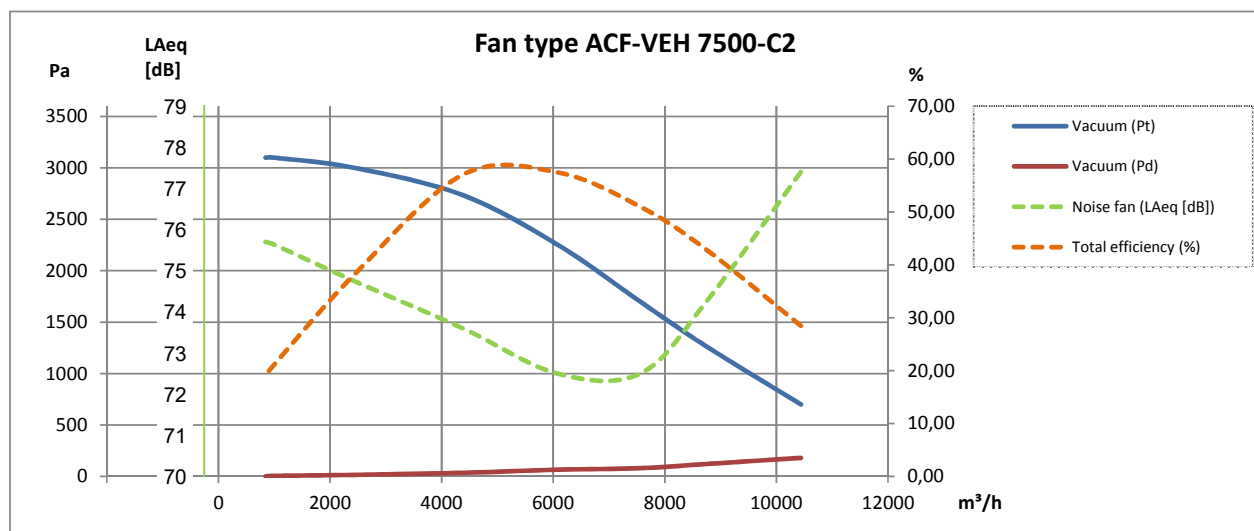
2-pole:



2-pole:

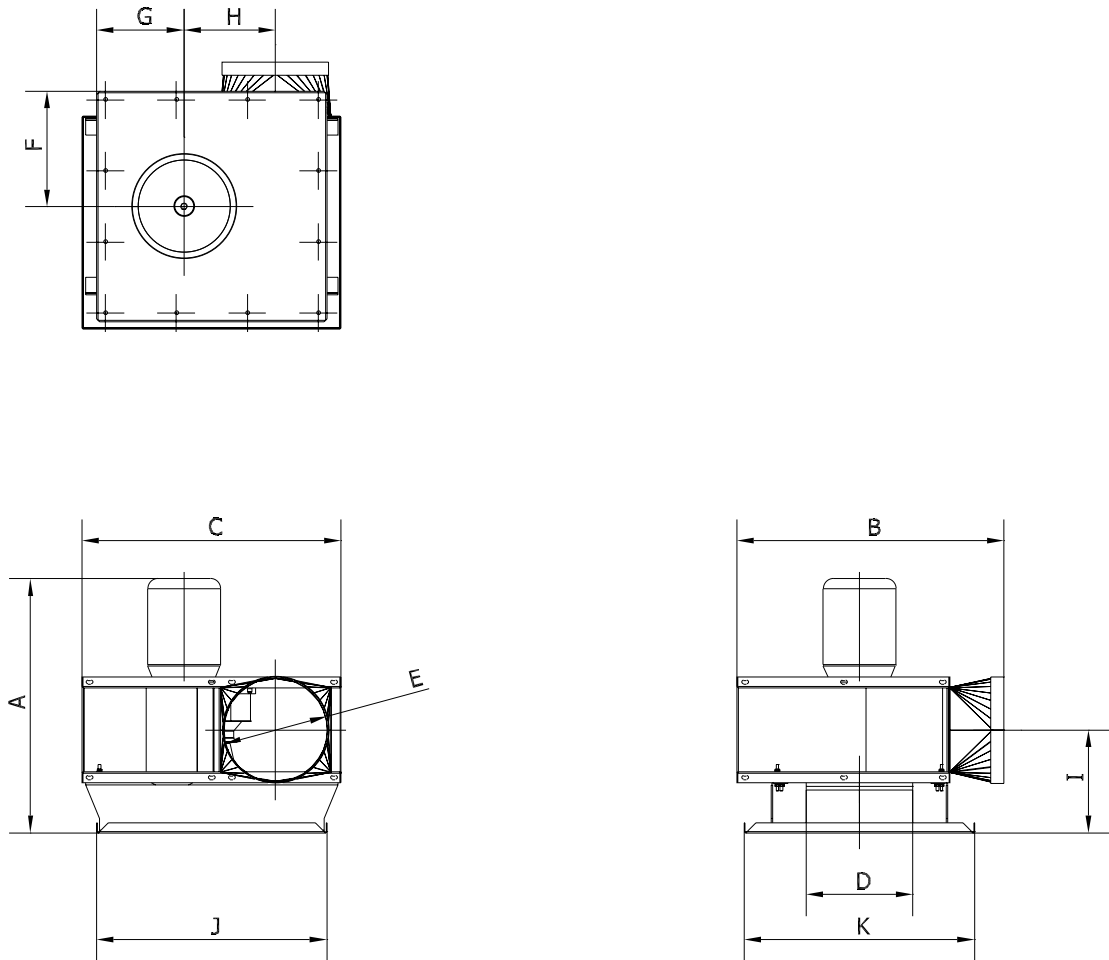


2-pole:



Rev. 07.19 Data is subject to alterations

Fan type ACF-VEH:

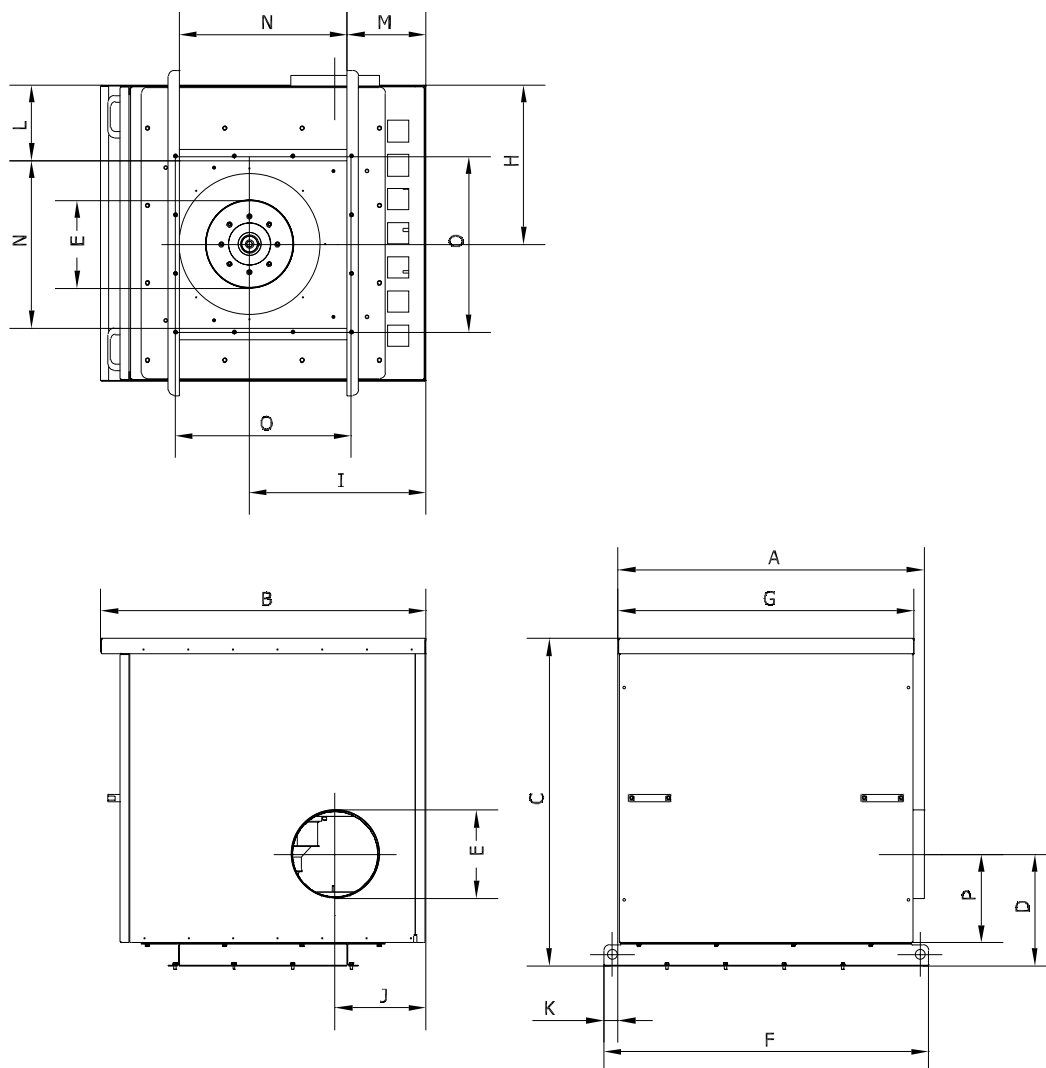


Type	Order no.	A	B	C	D	E	F	G	H	I	J	K
ACF-VEH 2200-C2 ¹⁾	04 032 970	691	790	767	ø315	ø315	340	258	268	292	680	680
ACF-VEH 3000-C2 ¹⁾	04 032 975	751	790	767	ø315	ø315	340	258	271	304	680	680
ACF-VEH 4000-C2 ¹⁾	04 032 980	764	913	859	ø400	ø400	340	254	304	307	680	680
ACF-VEH 4000-C2 ²⁾	04 034 970	764	913	859	ø400	ø400	440	368	304	307	880	880
ACF-VEH 5500-C2 ¹⁾	04 032 985	850	903	859	ø500	ø500	540	461	304	307	680	680
ACF-VEH 5500-C2 ²⁾	03 034 975	850	913	859	ø500	ø500	440	368	301	320	880	880
ACF-VEH 7500-C2 ²⁾	04 034 980	928	918	961	ø500	ø500	440	368	301	338	880	880

¹⁾ For cyclone filter type 39, 52H and 78H

²⁾ For cyclone filter type 52, 104H and 130H

Fan type ACF-VEH in sound enclosure type VBA:



Type	Order no.	A	B	C	D	E	F	G	H	I	J	K	L	M	N	O
VBA-ACF-VEH 2200-C2 ¹⁾	04 033 970	1096	1163	1171	376	∅315	1162	1060	570	632	357	51	270	282	600	630
VBA-ACF-VEH 3000-C2 ¹⁾	04 033 960	1096	1163	1171	388	∅315	1162	1060	570	632	361	51	270	282	600	630
VBA-ACF-VEH 4000-C2 ¹⁾	04 034 860	1096	1163	1171	391	∅400	1162	1060	570	632	327	51	270	28	600	630
VBA-ACF-VEH 4000-C2 ²⁾	04 034 890	1096	1163	1171	391	∅400	1162	1060	570	632	327	51	175	187	790	830
VBA-ACF-VEH 5500-C2 ¹⁾	04 034 840	1096	1163	1171	406	∅500	1162	1060	570	632	327	51	270	282	600	630
VBA-ACF-VEH 5500-C2 ²⁾	04 034 845	1069	1163	1171	400	∅500	1162	1060	570	632	327	51	175	187	790	830
VBA-ACF-VEH 7500-C2 ²⁾	04 034 850	1096	1163	1171	427	∅500	1162	1060	570	632	327	51	175	187	790	830

¹⁾ For cyclone filter type 39, 52H and 78H

²⁾ For cyclone filter type 52, 104H and 130H

Data is subject to alterations

Rev. 07.19

Cyclone filter type ACF-T is available with fan type ACF-RVH in the following combinations:

Type	Fan Order no.	Fan in sound enclosure Order no.	ACF 39	ACF 52H	ACF 78H	ACF 52	ACF 104H	ACF 130H	ACF 182H	ACF 234H
ACF-RVH 35/3-C2	04 033 230	04 033 850	•	•	•					
ACF-RVH 35/3-C2	04 034 230	04 034 400				•	•	•		
ACF-RVH 45-C2	04 033 240	04 032 950	•	•	•					
ACF-RVH 45-C2	04 034 240	04 037 400				•	•	•		
ACF-RVH 50-C2	04 034 250	04 033 950	•	•	•					
ACF-RVH 50-C2	04 034 300	04 034 950				•	•	•		
ACF-RVH 50-C2	04 034 350	04 040 400							•	•
ACF-RVH 60-C2	04 034 260	04 037 950				•	•	•		
ACF-RVH 60-C2	04 040 260	04 040 850							•	•
ACF-RVH 70-C2	04 040 27001	04 040 95002							•	•
ACF-RVH 80-C	04 040 280	04 043 850							•	•

Consumption data for fan type ACF-RVH:

Type	Volt [V]	{Rpm.}	[kW]	Rated current (Amp)	Start current [I_L/I_n]	Fan Weight [kg]	Fan in sound enclosure Weight [kg]
ACF-RVH 35/3-C2	3x400	2-pole	5.50 ¹⁾	■	■	64 ³⁾ / 72 ⁴⁾	263 ³⁾ / 262 ⁴⁾
ACF-RVH 45-C2	3x400	2-pole	7.50	■	■	93 ³⁾ / 100 ⁴⁾	284 ³⁾ / 275 ⁴⁾
ACF-RVH 50-C2	3x400	2-pole	11.00 ¹⁾	■	■	115 ³⁾ / 123 ⁴⁾ / 131 ⁵⁾	307 ³⁾ / 299 ⁴⁾ / 310 ⁵⁾
ACF-RVH 60-C2 ²⁾	3x400	2-pole	15.00	■	■	235 ⁴⁾ / 243 ⁵⁾	462 ⁴⁾ / 452 ⁵⁾
ACF-RVH 70-C2 ²⁾	3x400	2-pole	22.00	■	■	343 ⁵⁾	518 ⁵⁾
ACF-RVH 80-C2 ²⁾	3x400	2-pole	30.00	■	■	496 ⁵⁾	666 ⁵⁾

¹⁾ Increased efficiency

²⁾ Heavy-starting

³⁾ ACF 39, 52H and 78H.

⁴⁾ ACF 52, 104H and 130H.

⁵⁾ ACF 182H and 234H.

Motor data ≥ 0.75kW, 3x400V, according to IE3-motors.

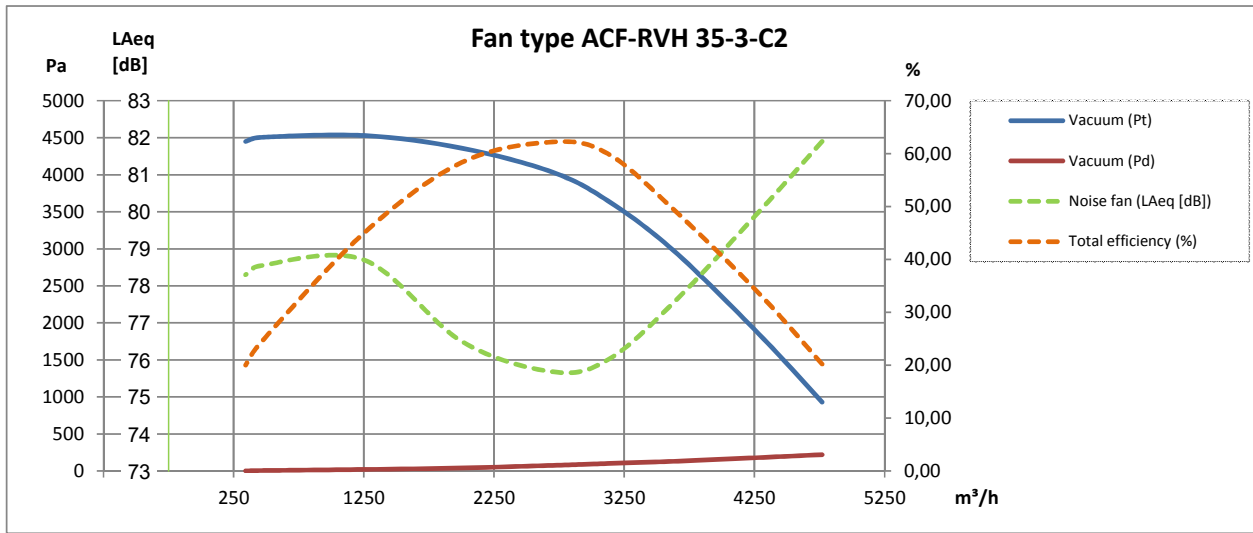
■ See section "General information" conc. electro motors

Fan	Achieved efficiency	Measurement category	Efficiency category	Efficiency grade	VSD	Production year	Manufacturer page	Modul number/type	Rated motor power input, flow rate and pressure			Rpm.	Specific ratio	Disposal page	Environment page	Mounting measurement page
									kW	m ³ /h	Pa (Ps)					
03 402 000	51,3	D	Total	■	NO	CE-mark	A15	RVH 35/3-C2	5,04	2700	4085	2945	1,04	A15	A15	A15
03 406 400	64,3	D	Total	■	NO	CE-mark	A15	RVH 45-C2	8,08	5432	3380	2933	1,03	A15	A15	A15
03 410 400	68,2	D	Total	■	NO	CE-mark	A15	RVH 50-C2	9,84	6561	3610	2942	1,04	A15	A15	A15
03 415 000	61,3	D	Total	■	NO	CE-mark	A15	RVH 60-C2	15,53	11305	2910	2944	1,03	A15	A15	A15
03 417 300	65,3	D	Total	■	NO	CE-mark	A15	RVH 70-C2	20,41	12270	3850	2955	1,04	A15	A15	A15
03 418 00001	76,7	D	Total	■	NO	CE-mark	A15	RVH 80-C2	27,14	13557	5640	2977	1,06	A15	A15	A15

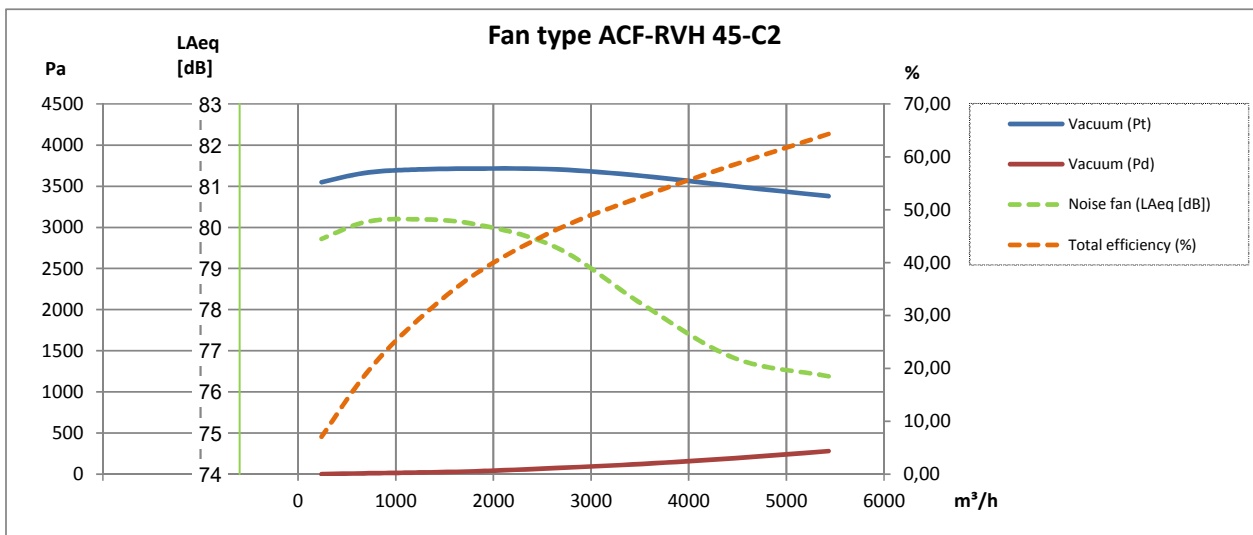
■ Not approved according to EU327/2011 ERP 2015

May be mounted on clean air side of Gram filter units as transport fan according to EU 327/2011 and EN 13349/2010

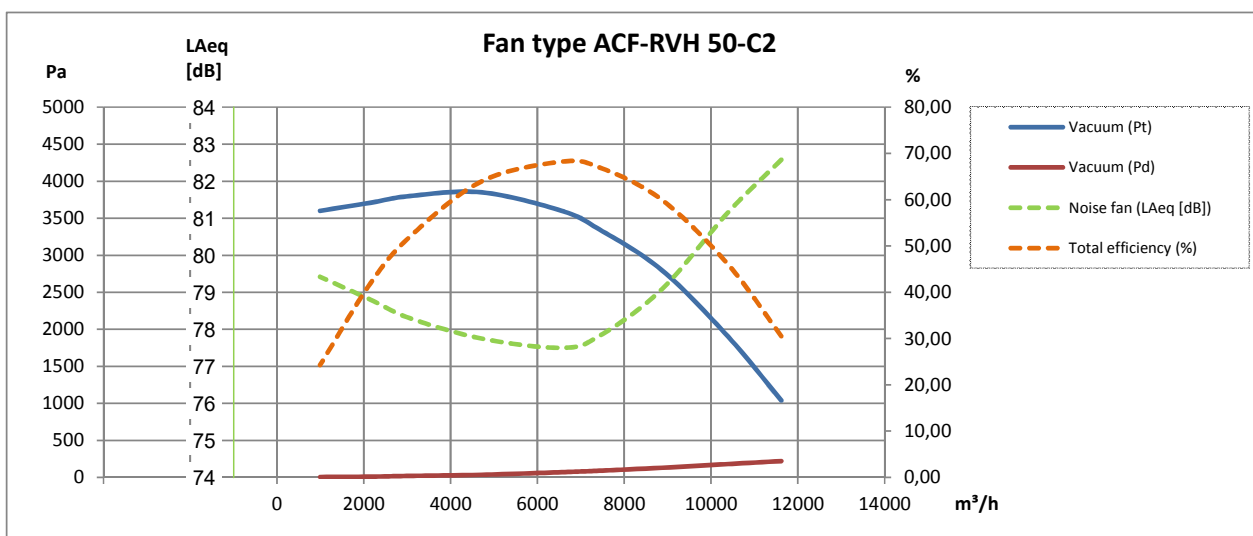
2-pole:



2-pole:

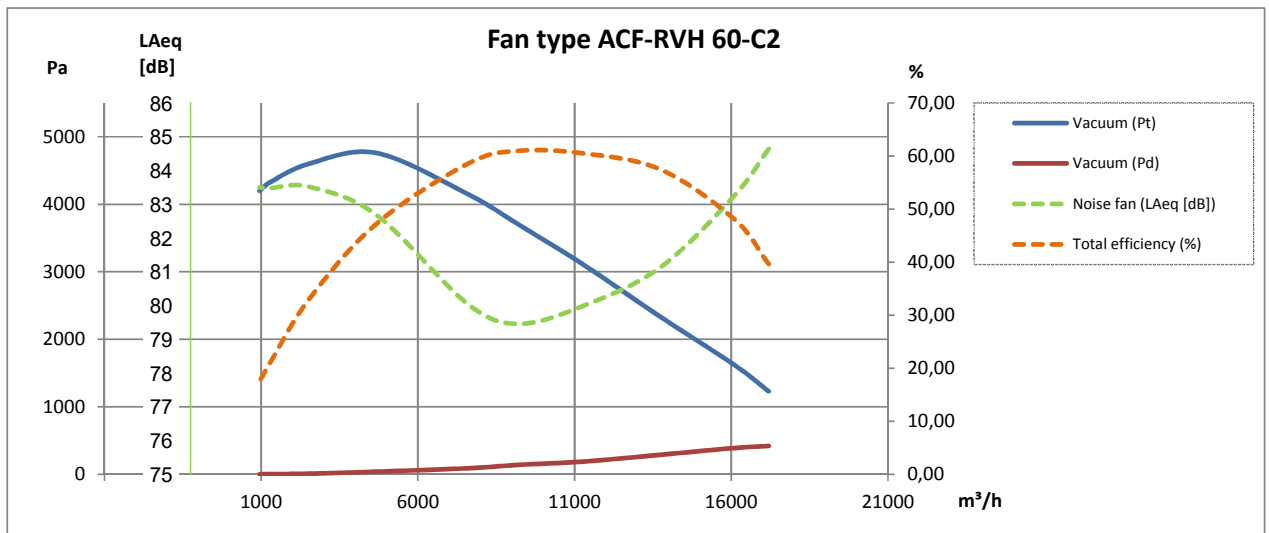


2-pole:

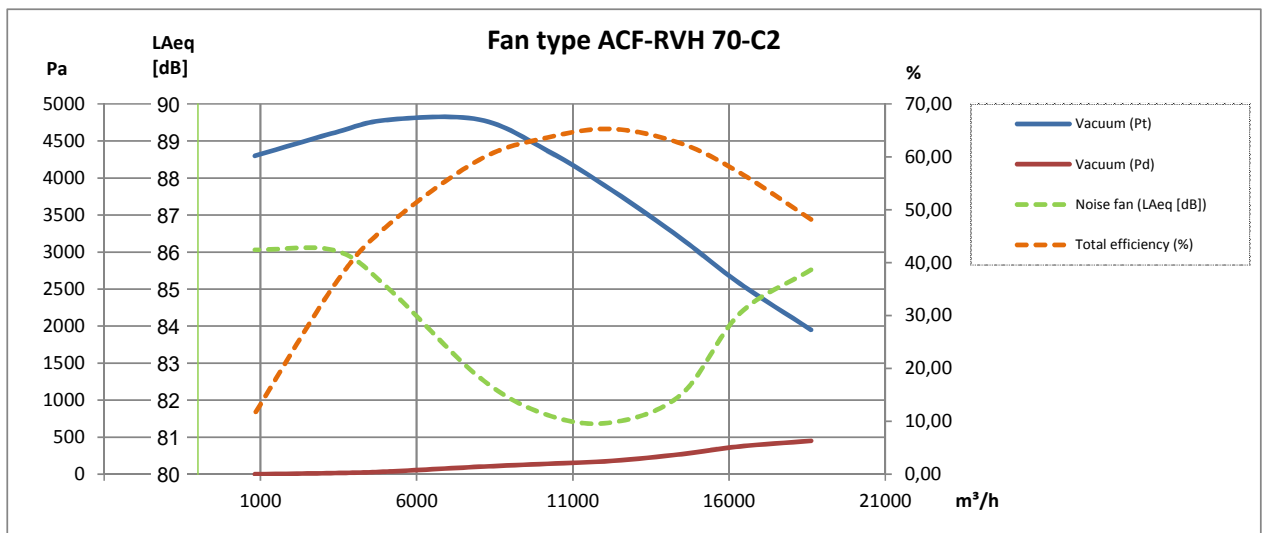


Rev. 07.19 Data is subject to alterations

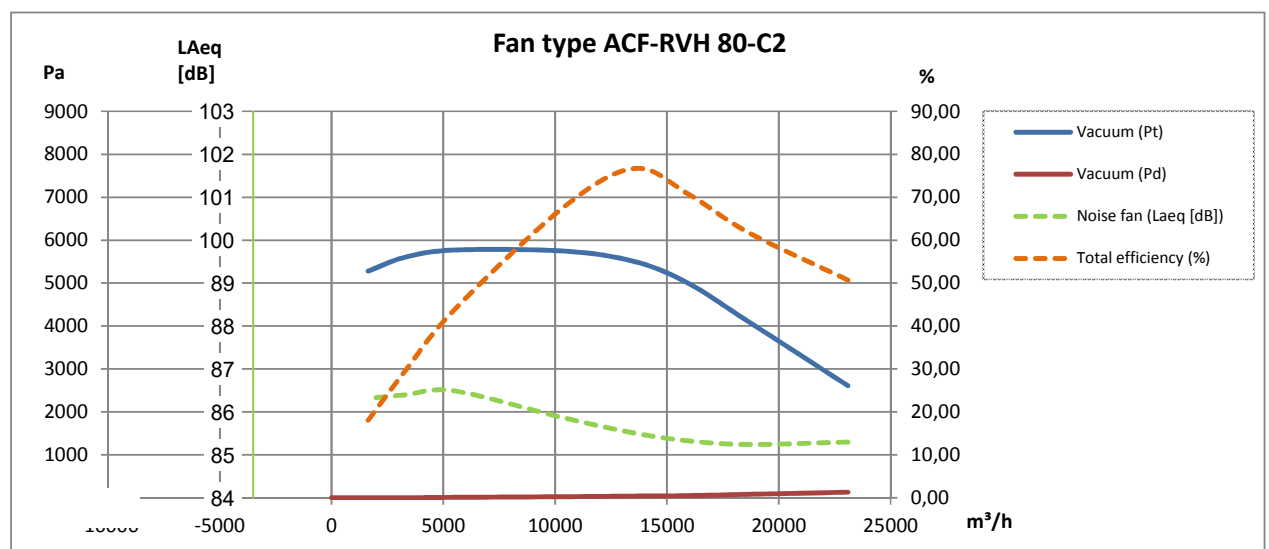
2-pole:



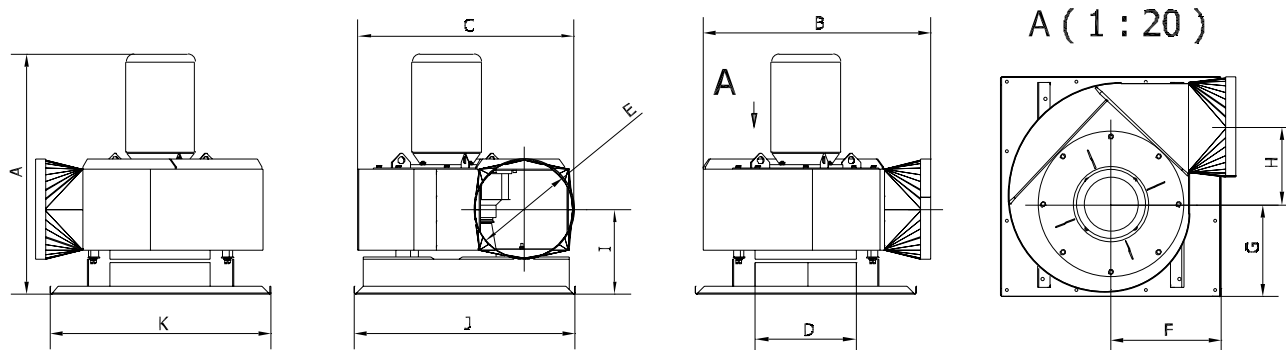
2-pole:



2-pole:



Fan type ACF-VEH:



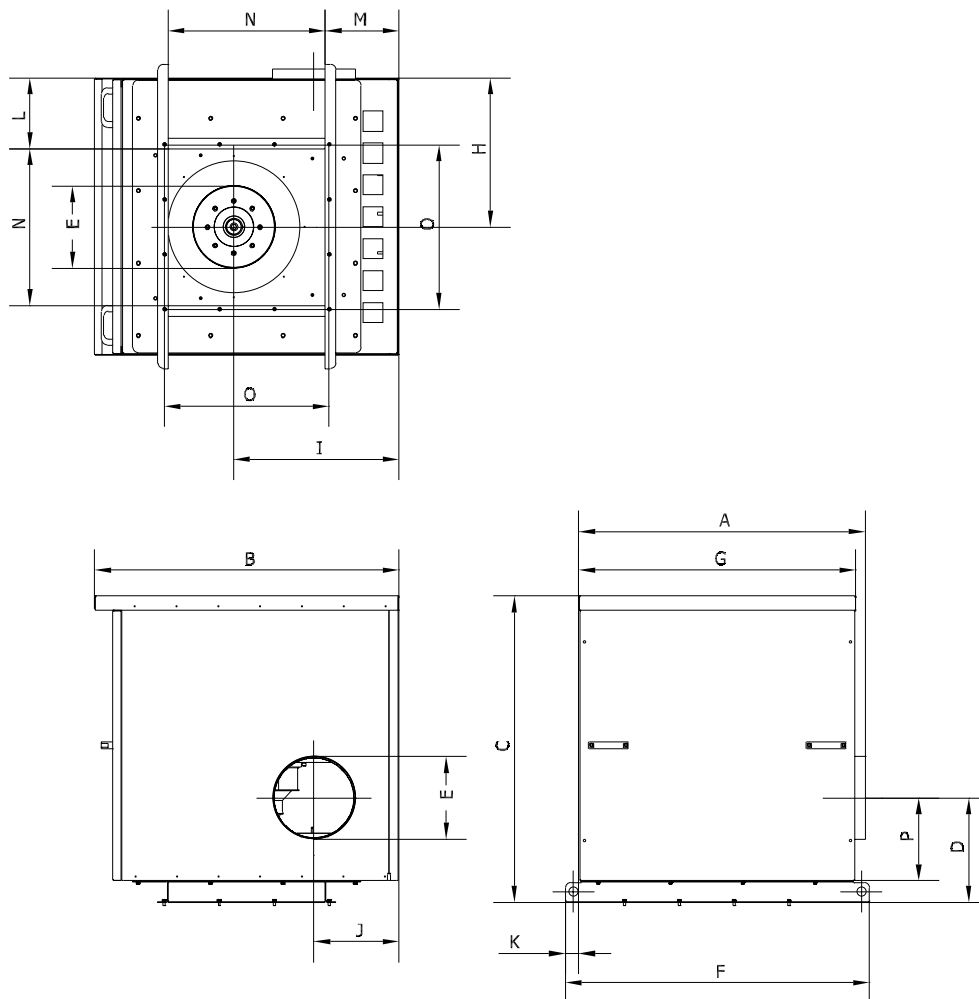
Type	Varenr.	A	B	C	D	E	F	G	H	I	J	K
ACF-RVH 35/3-C2 ¹⁾	04 033 230	629	810	705	ø250	ø250	340	340	257	218	680	680
ACF-RVH 35/3-C2 ²⁾	04 034 230	669	810	705	ø250	ø250	440	368	257	258	880	880
ACF-RVH 45-C2 ¹⁾	04 033 240	877	907	838	ø315	ø315	340	254	307	315	680	680
ACF-RVH 45-C2 ²⁾	04 034 240	877	907	838	ø315	ø315	440	368	307	315	880	880
ACF-RVH 50-C2 ¹⁾	04 034 250	956	907	860	ø400	ø400	340	255	308	339	680	680
ACF-RVH 50-C2 ²⁾	04 034 300	956	907	860	ø400	ø400	440	368	308	339	880	880
ACF-RVH 50-C2 ³⁾	04 034 350	956	907	860	ø400	ø400	540	461	308	339	1080	1080
ACF-RVH 60-C2 ²⁾	04 034 260	1020	1016	1027	ø500	ø500	440	368	359	348	880	880
ACF-RVH 60-C2 ³⁾	04 040 260	1020	1016	1027	ø500	ø500	540	461	359	348	1080	1080
ACF-RVH 70-C2 ³⁾	04 040 27001	1147	1015	1087	ø630	ø630	540	461	356	364	1080	1080
ACF-RVH 80-C2 ³⁾	04 040 280	1392	1222	1270	ø800	ø800	540	461	406	451	1080	1080

¹⁾ For cyclone filter type 39, 52H and 78H

²⁾ For cyclone filter type 52, 104H and 130H

³⁾ For cyclone filter type 182H and 234H

Fan type ACF-RVH in sound enclosure type VBA:

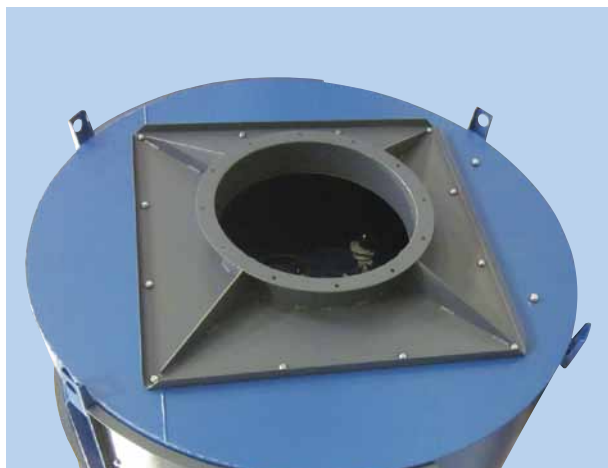


Type	Varenr.	A	B	C	D	E	F	G	H	I	J	K	L	M	N	O
VBA-ACF-RVH 35/3-C2 ¹⁾	04 033 850	1096	1163	1171	342	∅250	1162	1060	570	632	376	51	270	282	600	630
VBA-ACF-RVH 35/3-C2 ²⁾	04 034 400	1096	1163	1171	342	∅250	1162	1060	570	632	376	51	175	187	790	830
VBA-ACF-RVH 45-C2 ¹⁾	04 032 950	1096	1163	1171	399	∅315	1162	1060	570	632	325	51	270	282	600	630
VBA-ACF-RVH 45-C2 ²⁾	04 037 400	1096	1163	1169	397	∅315	1162	1060	570	632	321	51	175	187	790	830
VBA-ACF-RVH 50-C2 ¹⁾	04 033 950	1096	1163	1171	423	∅400	1162	1060	570	632	322	51	270	282	600	630
VBA-ACF-RVH 50-C2 ²⁾	04 034 950	1096	1163	1171	423	∅400	1162	1060	570	632	322	51	175	187	790	830
VBA-ACF-RVH 50-C2 ³⁾	04 040 400	1096	1163	1171	423	∅400	1162	1060	570	632	322	51	175	187	790	1030
VBA-ACF-RVH 60-C2 ²⁾	04 037 950	1238	1347	1311	432	∅500	1162	1202	601	751	395	20	166	306	790	830
VBA-ACF-RVH 60-C2 ³⁾	04 040 850	1238	1347	1311	432	∅500	1304	1202	601	751	395	51	106	206	990	1030
VBA-ACF-RVH 70-C2 ³⁾	04 040 95002	1238	1347	1311	443	∅630	1304	1202	601	751	386	51	106	206	990	1030
VBA-ACF-RVH 80-C2 ³⁾	04 043 850	1432	1545	1611	535	∅800	1654	1396	747	901	495	178	247	351	1000	1030

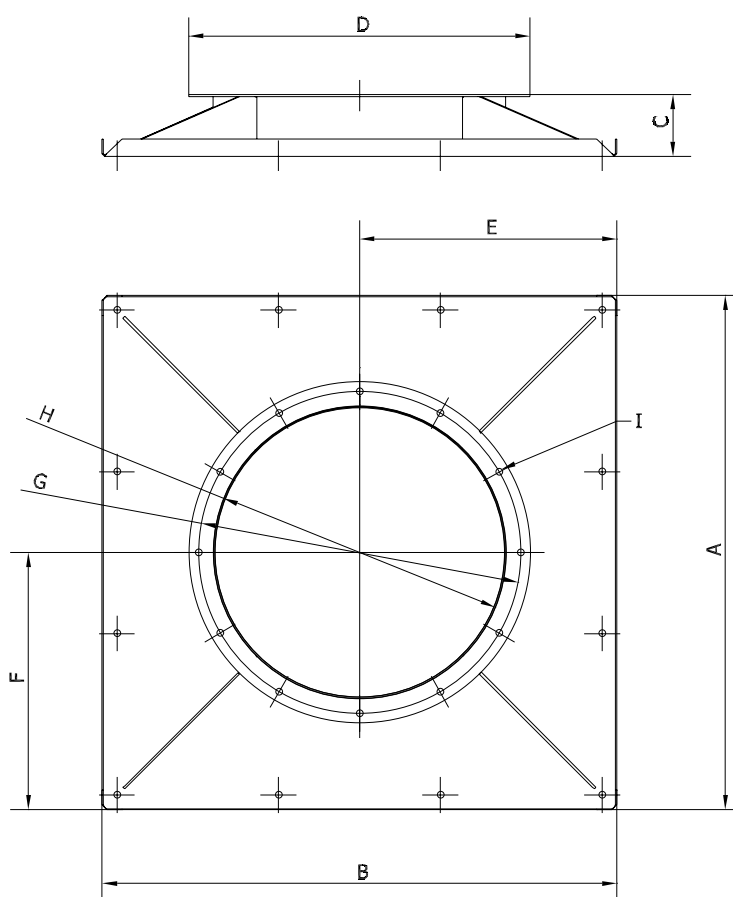
¹⁾ For cyclone filter type 39, 52H and 78H

²⁾ For cyclone filter type 52, 104H and 130H

³⁾ For cyclone filter type 182H and 234H



Top lid for bolting on fans (no Gram product) on cyclone filter type ACF-T - incl. unit reinforcement:



Type	Order no.	A	B	C	D	E	F	G	H	I [stk.]	Max. [kg]
ACF-T 39-78H	04 033 310	680	680	106	ø504	340	340	ø468	ø401	8	200
ACF-T 52-130H	04 034 310	880	880	106	ø584	440	440	ø551	ø501	12	300
ACF-T 182H-234H	04 040 310	1080	1080	106	ø739	540	540	ø698	ø631	16	400

Type	Order no.	ACF 39	ACF 52H	ACF 78H	ACF 52	ACF 104H	ACF 130H	ACF 182H	ACF 234H
ACF-T 39-78H	04 033 310	•	•	•					
ACF-T 52-130H	04 034 310				•	•	•		
ACF-T 182H-234H	04 040 310							•	•

Data is subject to alterations Rev. 07.19